

**DISTRICT INDEX**  
Scale 1:7,000,000

**KEY STATISTICS OF SURAT DISTRICT**  
(Census 1991)

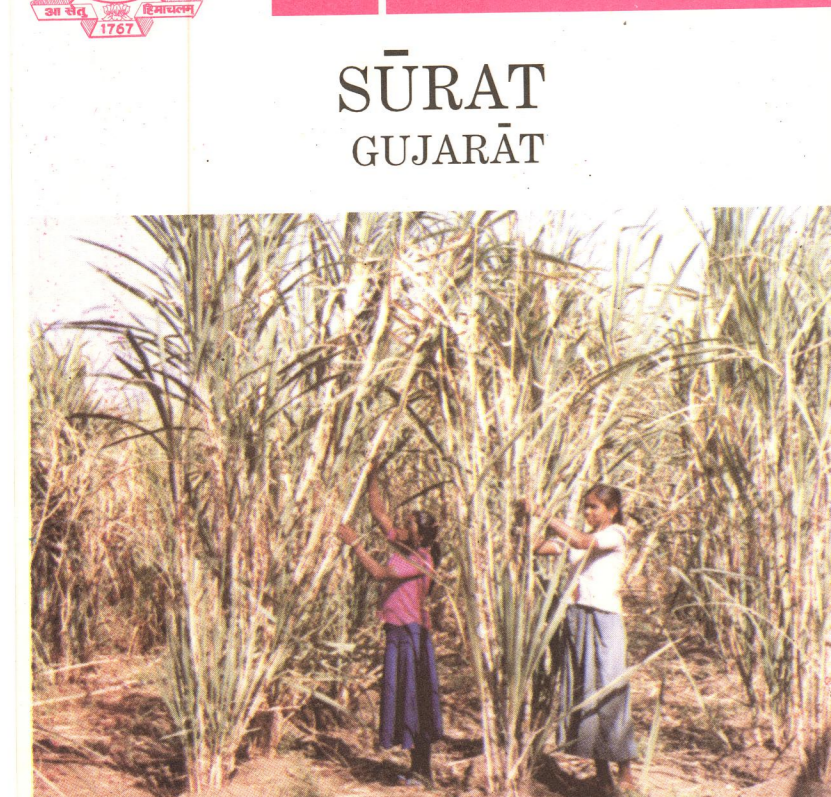
Area: 7762 sq. km; Population: 33,97,900; Literacy: 53.89 %  
Density of population: 438 per sq. km; Main language spoken: Gujarati

PRICE: FORTY TWO RUPEES

**DISTRICT PLANNING MAP SERIES**

**DISTRICT PLANNING MAP SERIES**

**SURAT GUJARAT**



**SURVEY OF INDIA**

DEPARTMENT OF SCIENCE & TECHNOLOGY

**SURAT DISTRICT**

The basic objective of this "Map Series" is to provide users and planners with all topographic and thematic information related to a district.

SURAT district is situated in southern part of Gujarat State. About the time 1498-1521 a rich Hindu trader named Gopi founded a new town near Rander. He consulted the astrologers and fixed the name Surat, of Suryapur. But when the king of Gujarat was approached for approval of this name, the king did not agree and got it changed to "Surat", a chapter in Koran. Long before SURAT came into prominence, Rander was the principal commercial centre. As the prosperity of Rander declined in the sixteenth century, on account of raids by the Portuguese, Surat began to assume importance.

The topography of the district in general can be described as tilting one from towering hills and plateau in east to rolling plains in the middle part and further to flat coastal "Kharland" in west. Out of the total geographical area, about 53.94% of the land is under cultivation and 18.26% covered by forest.

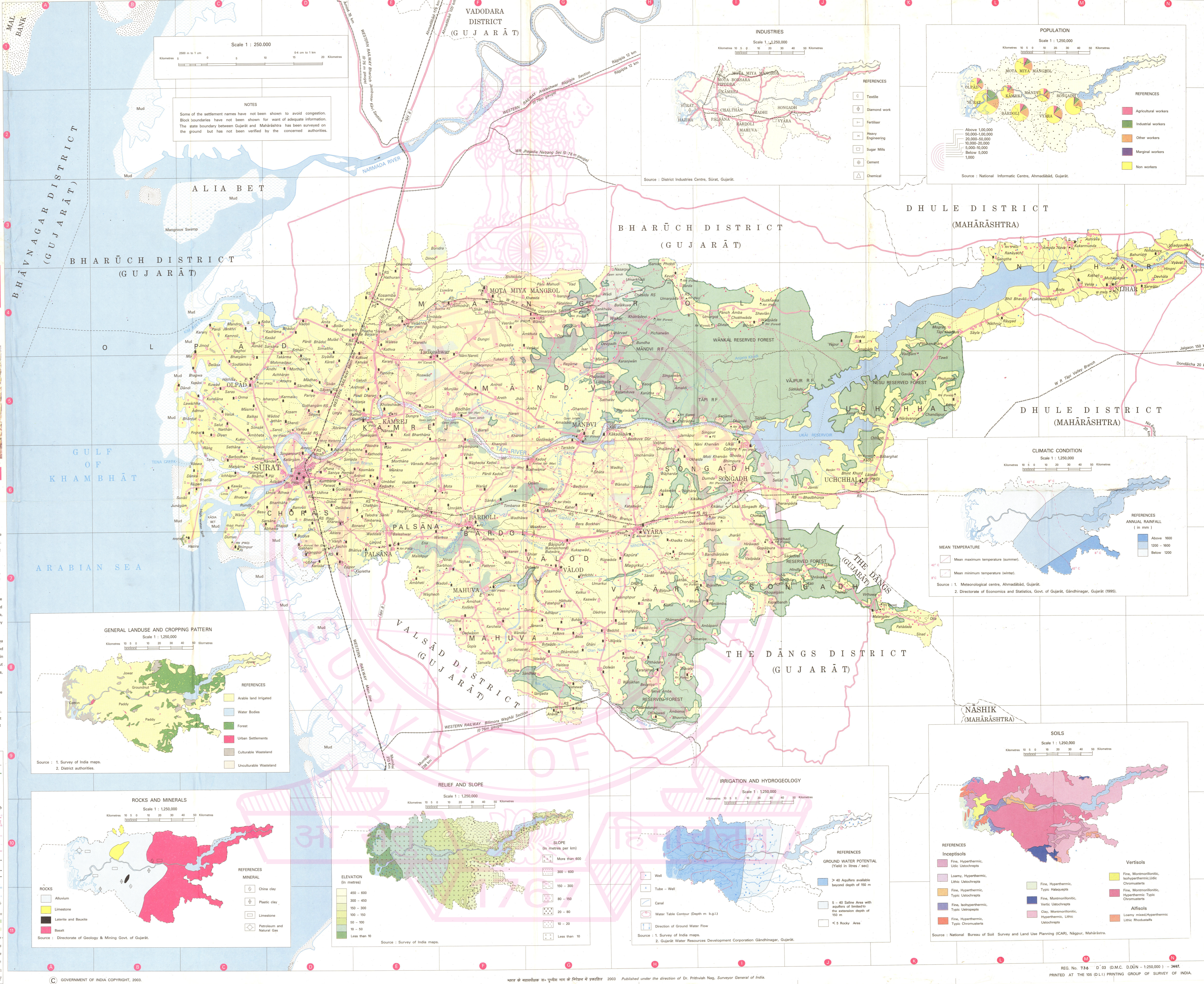
River Tapi flows through SURAT district before it meets the Arabian Sea and over a number of centuries it has brought rich sediments during flood which has made the Tapi valley fertile. Paddy, Jowar and Pulses are main food crops. The major cash crops are Sugarcane, Banana, Groundnut and Vegetables. The main sources of irrigation in the district are canals, tanks and wells.

The climate of the district is moderate with mean maximum temperature of 42°C in summer and the mean minimum of 8°C in winter.

The main industries in the district are Textiles, Chemicals and Engineering. The district has a number of Sugar & Paper Mills, Milk Union and Cement processing units. There are many places of tourist interest in the district but Sardar Vallabhbhai Patel Museum is a living history of SURAT.

**REFERENCES**

Boundaries: international; state; district  
Boundaries: tahsil or taluk; forest  
Name, headquarter: district  
Name, headquarter: tahsil or taluk  
Name: other important places  
Names: forest; village  
Settlements: urban; rural; huts  
Fort: conventional; surveyed  
Roads: metalled according to importance; unmetalled  
Cart-track; Peck-track  
Bridges: roads; railways; Ford or Ferry  
Railways: broad gauge with station; under construction  
Main power line. Embankment. Cutting  
River: perennial; dry with island & rocks. Canal  
Tube-well. Wells: lined; unlined; Spring  
Lakes / Tanks: perennial; dry with embankment  
Tanks, conventional: perennial; dry  
Arable land irrigated. Forest  
Wasteland: unculturable; culturable  
Hospital. Dispensary. Veterinary Hospital  
Post Office. Post & Telegraph Office. Police station  
Rest-house. Dikri bungalow. Inspection bungalow  
Places of tourist / historical importance. Bank  
Temples. Chhatris. Church. Grave. Mosque. Idgah. Tomb  
Educational institutions: from H. S. School level onward



**NOTES**

Some of the settlement names have not been shown to avoid congestion. Block boundaries have not been shown for want of adequate information. The state boundary between Gujarat and Maharashtra has been surveyed on the ground but has not been verified by the concerned authorities.

**ALIA BET**  
Mud

**BHARUCH DISTRICT (GUJARAT)**

**BHAVNAGAR DISTRICT (GUJARAT)**

**OL**

**GULF OF KAMBHAT**

**ARABIAN SEA**

